

## DESIGNED FOR THE FIRST TIME BUYER.

Offering exceptional value, the AstroMaster™ series features a compact and portable design with ample optical performance to excite any newcomer to the world of amateur astronomy.

Models with the Altazimuth mount have a convenient pan handle with built-in clutch for easy targeting and smooth motion. Our models featuring the German Equatorial mount are a good choice for viewing stars, nebulae, star clusters, and planets. Built-in setting circle aids in locating these objects.

When used for astronomical viewing, AstroMasters yield breathtaking views of the Moon, Saturn with its ring structure, Jupiter and its belts and moons, nebulae and star clusters.

Every instrument features all glass optical elements as well as smooth operating steel tripod mountings featuring manual motion controls. All models feature coated optics for enhanced image brightness and clarity.

- Quick and easy no-tool setup
- Permanently mounted StarPointer
- Erect image optics – Ideal for terrestrial and astronomical use
- Quick release dovetail attachment – no tool setup
- Pan handle Alt-Az control with clutch – for smooth and accurate pointing (21061, 21063 & 31043)
- German Equatorial Mount with Setting circles – to accurately locate and track sky objects (21062, 31035, 21064, 31042 & 31045)
- Rugged pre-assembled tripod with 1.25" steel tube legs – Provides a rigid and stable platform
- All coated glass optics for clear, crisp images
- Deluxe accessory tray for convenient storage of accessories
- "The Sky" Level 1 planetarium software with 10,000 object database and enhanced images



# AstroMaster™ Series

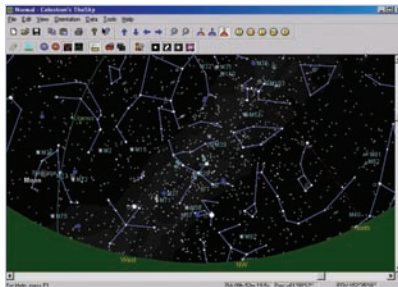
AstroMaster 90EQ  
Model #21064



AstroMaster 114EQ  
Model #31042



AstroMaster 90AZ  
Model #21063



Locate and identify thousands of celestial objects on your laptop or PC with "The Sky" Level 1 software included FREE with every AstroMaster model.



Altazimuth models have a convenient pan handle with built-in clutch for easy targeting and smooth motion. This style of mount is great for viewing nature and celestial objects.



The German Equatorial mount is a good choice for viewing stars, nebulae, star clusters, and planets. A built-in setting circle aids in locating these objects.

for more information [www.celestron.com/astromaster](http://www.celestron.com/astromaster)

## specifications

Model	Item #	Aperture	Type	Focal Length	Eyepieces	Mount	Coating	Weight
AstroMaster 70AZ	21061	70mm (2.8")	Refractor	900mm f/13	20mm (45x), 10mm (90x)	Altazimuth	Fully Coated	18 lbs
AstroMaster 70EQ	21062	70mm (2.8")	Refractor	900mm f/13	20mm (45x), 10mm (90x)	CG-2 Equatorial	Fully Coated	18 lbs
AstroMaster 76EQ	31035	76mm (3")	Reflector	700mm f/9	20mm (35x), 10mm (70x)	CG-2 Equatorial	Aluminum	16 lbs
AstroMaster 90AZ	21063	90mm (3.5")	Refractor	1000mm f/11	20mm (50x), 10mm (100x)	Altazimuth	Multi-coated	20 lbs
AstroMaster 90EQ	21064	90mm (3.5")	Refractor	1000mm f/11	20mm (50x), 10mm (100x)	CG-3 Equatorial	Multi-coated	23 lbs
AstroMaster 114EQ	31042	114mm (4.5")	Reflector	1000mm f/9	20mm (50x), 10mm (100x)	CG-2 Equatorial	Aluminum	17 lbs
AstroMaster 114AZ	31043	114mm (4.5")	Reflector	1000mm f/9	20mm (50x), 10mm (100x)	Altazimuth	Aluminum	17 lbs
AstroMaster 130EQ	31045	130mm (5")	Reflector	650mm f/5	20mm (33x), 10mm (65x)	CG-3 Equatorial	Aluminum	24 lbs

Product design and specifications are subject to change without prior notification.



2835 Columbia Street ■ Torrance, CA 90503 U.S.A.

Tel: 310.328.9560 ■ [www.celestron.com](http://www.celestron.com)