

A PREMIUM OPTICAL SYSTEM TO EXPLORE THE UNIVERSE

The Omni XLT series was designed to offer a selection of models with the quality optics and stable platform that serious amateurs can appreciate.

The new Omni CG-4 heavy-duty German Equatorial mount offers a sturdy tripod with 1.75" stainless steel legs and center tray for superior rigidity and vibration dampening.

Along with the stable platform of the CG-4 mount the Omni™ XLT series features high quality optics. Using aspheric shaping technology in conjunction with hand-figuring the optics the Omni XLT presents an image with virtually no spherical aberration. We also added our famous StarBright® XLT coating system to further enhance light transmission.

With superior optics and a stable platform the Omni XLT series is a great choice for astrophotography. Use the optional dual-axis motor drive (#93522) and polar axis finder (#94221) to track objects for long exposure photography.

- High quality optics start with each lens and/or mirror being hand selected so only the finest grade of optical glass is used
- StarBright® XLT coatings provide maximized light transmission
- 25mm multi-coated eyepiece – 20mm eye relief, 50° FOV
- 1.25" star diagonal (except #31057)
- CG-4 German Equatorial Mount with setting circles and slow motion controls – to accurately locate and track sky objects
- Ball bearings in both axis of the mount for smooth performance
- Heavy-duty pre-assembled stainless steel tripod featuring 1.75" legs, accessory tray and bubble level
- Easy no-tool setup
- "The Sky" Level 1 planetarium software with 10,000 object database and enhanced images



Omni™ XLT Series



Omni XLT102
Model #21088



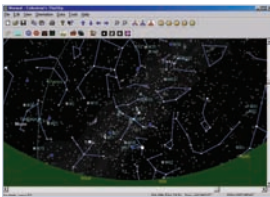
Omni XLT120
Model #21090



Omni XLT127
Model #11084



Omni XLT150
Model #31057



Locate and identify thousands of celestial objects on your laptop or PC with "The Sky" Level 1 software included FREE with every Omni XLT model.

for more information www.celestron.com/omnixlt

specifications

Model #	21088	21090	11084	31057
Model Name	Omni XLT102	Omni XLT120	Omni XLT127	Omni XLT150
Optical Design	Refractor	Refractor	Schmidt-Cassegrain	Newtonian Reflector
Aperture	102mm (4")	120mm (4.7")	127mm (5")	150mm (6")
Focal Length	1000mm	1000mm	1250mm	750mm
Focal Ratio	F/10	F/8.3	F/10	F/5
Coatings	StarBright® XLT	StarBright® XLT	StarBright® XLT	StarBright® XLT
Finderscope	6x30	6x30	6x30	6x30
Mount	CG-4 German Equatorial	CG-4 German Equatorial	CG-4 German Equatorial	CG-4 German Equatorial
Eyepiece	25mm (40x)	25mm (40x)	25mm (50x)	25mm (30x)
Star Diagonal	1.25"	1.25"	1.25"	n/a
Accessory tray	No Tool, Quick release	No Tool, Quick release	No Tool, Quick release	No Tool, Quick release
Tripod	Pre-assembled Steel	Pre-assembled Steel	Pre-assembled Steel	Pre-assembled Steel
Software	"The Sky" L1	"The Sky" L1	"The Sky" L1	"The Sky" L1

Product design and specifications are subject to change without prior notification.



2835 Columbia Street ■ Torrance, CA 90503 U.S.A.

Tel: 310.328.9560 ■ www.celestron.com